



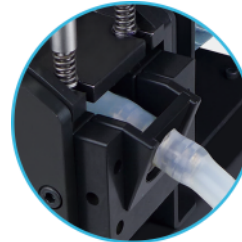
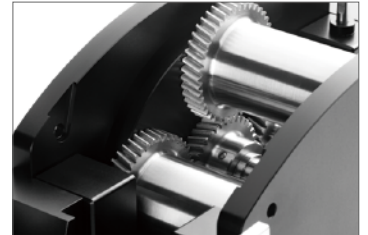
# Explosion Proof Peristaltic Pump

**Model No.:** EXP300-III-1

**Flow Rate:** 1000-28150mL/min



## Roller Components



DZ45-I  
tubing with connector



DZ45-II  
continuous tubing

## Product Features

- Driven by explosion-proof motor, the power is strong.
- Stepless speed regulation, reversible inversion.
- IP rate: IP55, Explosion-proof grade: ExdIIBT4 Gb
- Suitable for inflammable and explosive industrial sites.

## Typical Application

Bio- medical, Chemical industry, Environmental protection



## Pump Head



DZ45 Pump Head

Drive	Speed(rpm)	Pump Head	Tube Size	Flow Rate (mL/min)
EXP300-1/DZ45	37.5-350	DZ45	88#, 92#	1000-28150

## Technical Specifications

Flow rate	37.5-350rpm
Speed range	1000-28150mL/min
Speed regulation	Frequency converter speed regulation
Working voltage	3 phase 380V(standard)/3 phase 220V(optional)
Rated power	0.55kW
Condition temperature	0~40°C
Relative humidity	<80%
Explosion-proof grade	ExdIIBT4
IP rate	IP55



Dimension Drawing(Unit:mm)

