



Dispensing Peristaltic Pump

Model No.: F1

Flow Rate: 0.0002-645mL/min



Product Introduction

Intelligent dispensing peristaltic pump, imported 4.3 inch industrial grade true color LCD screen, touch screen control. Can preset the dispensing volume, dispensing time, pause time, copy numbers. Can save 60 common filling modes. Touch screen control, can preset the dispensing volume, dispensing time, pause time, copy numbers and back suction angle. Animation display the working status. Dispensing data, setting data and system setting display in the same screen. Industry application: Pharmaceutical Equipment, Filling Machine; Medicine, cosmetic, food and beverage filling.

Product Features

- Imported 4.3" industrial grade color LCD screen display, with touch screen control.
- Can preset dispensing volume, dispensing time, pause time and copy numbers.
- With intelligent calibration function and online micro adjusting function.
- The pump can store 60 commonly used filling modes.
- Back suction angle setting, avoid liquid drop off when the pump stops working.
- Two working mode: Volume dispensing and speed dispensing (special for viscous liquid)
- Can communicate with balance, closed-loop control.



Pump Head



EasyPump Pump Head

EasyPump-PPS Pump Head

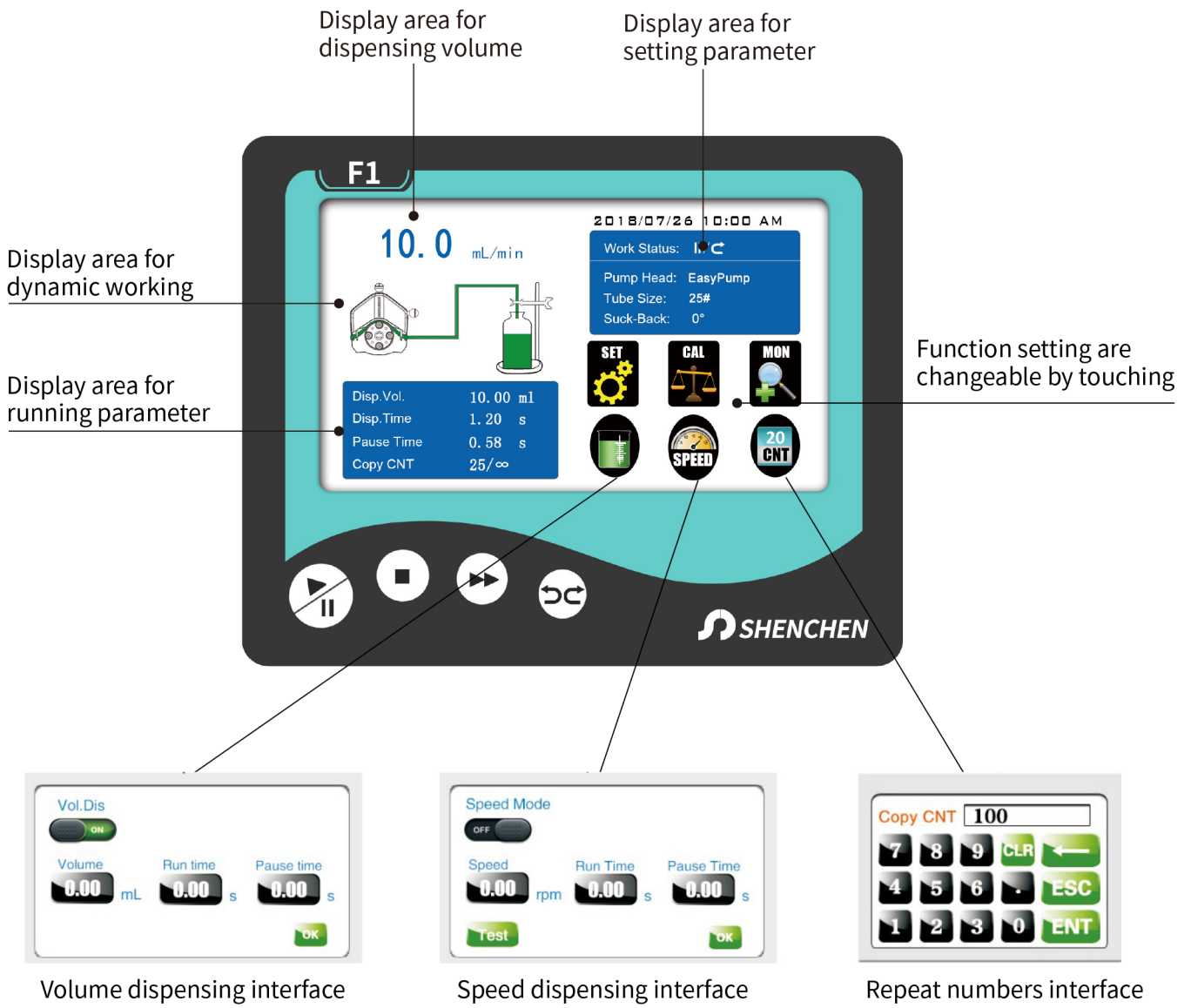
AMC Pump Head

YZ Pump Head

Drive&Speed	Pump Head	Tubing Size	Flow Rate(mL/min)
F1 0.1-150rpm	EasyPumpI/III	13#, 14#, 19#, 16#, 25#, 17#, 18#	0.0053-645
	EasyPumpII/IV	15#, 24#	0.18-410
	EasyPumpV/VI	13#, 14#, 19#, 16#, 25#	0.0053-295
	2*EasyPumpI/III	13#, 14#, 19#, 16#, 25#	0.0053-295
	2*EasyPumpII/IV	15#	0.18-270
	2*EasyPumpV/VI	13#, 14#, 19#, 16#	0.0053-140
	AMC1-AMC12(10)	Inner diameter:0.13~3mm Wall thickness: 0.8~1mm	0.0002-48(suggestion working speeds≤150rpm)
	AMC1-AMC12(6)		0.0002-65(suggestion working speeds≤150rpm)
	YZ1515x	13#, 14#, 19#, 16#, 25#, 17#, 18#	0.007-570
	YZ2515x	15#, 24#	0.17-435



Screen Display





Technical Specifications

Flow rate range	0.0002-645mL/min
Speed range	0.1-150rpm
Speed resolution	0.01rpm
Dispensing volume range	0.1-9999.99mL
Dispensing volume resolution	0.01mL
Dispensing time	0.1-9999.99S
Pause time	0.1-9999.99S
Time resolution	0.01s
Copy numbers	1-9999 times, setting'0' means unlimited
Back suction angle	0-360°
Dispensing accuracy	< +0.5%
Motor type	Stepper motor
Display	Industrial grade 4.3" color LCD display
Control method	Touch screen and Mechanical keypad
Keypad lifetime	300,000 times
Start/stop, direction signal	Passive switch signal, such as foot pedal switch; Active switch signal: 5-24V universal
Output interface	Output motor working status(Open-Collector output)
Communication interface	RS232, RS485 Modbus protocol (RTU mode)
Power supply	AC 220V+10% 50Hz/60Hz (Standard) AC 110V+10% 50Hz/60Hz (Optional)
Drive dimension(L xWxH)	252x152x243 mm
Drive weight	4.20 kg
Power consumption	< 80W
Condition temperature	0-40°C
Relative humidity	< 80%

Dimension Drawing(Unit: mm)

